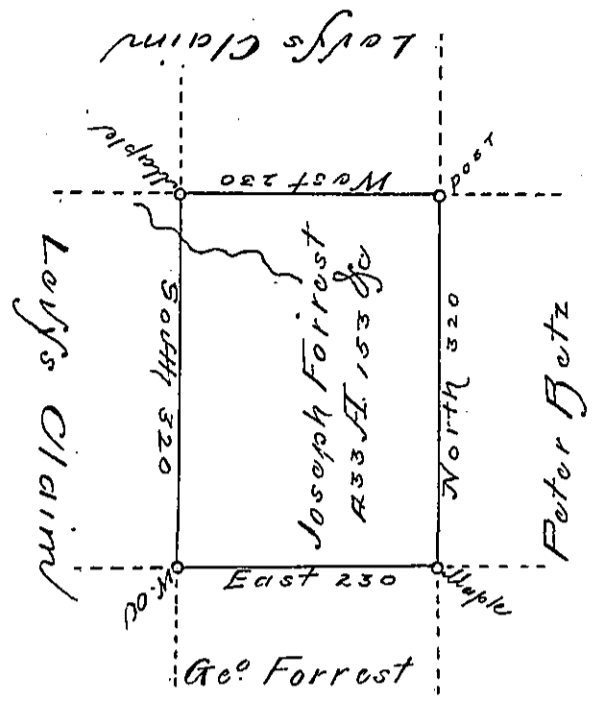


H 427



Situate in Mifflin County Upper Bald Eagle
 township on the waters of Birch Creek, containing
 Four hundred, thirty three Acres, one hundred &
 fifty three perches & the allow of six Perch &
 Surveyed 15 July 1792, In pursuance of a Warrant
 dated 5th July 1792.

To Dan Brodhead Esq }
 Surveyor General

Jo. J. Wallis S.S.
 J. J.

IN TESTIMONY that the above is a copy of the original remaining on file in the
 Department of Internal Affairs of Pennsylvania, made con-
 formably to an Act of Assembly approved the 16th day of
 February, 1833, I have hereunto set my Hand and caused
 the Seal of said Department to be affixed at Harrisburg, this

thirtieth day of March 1894

Thos. J. Stewart
 Secretary of Internal Affairs.